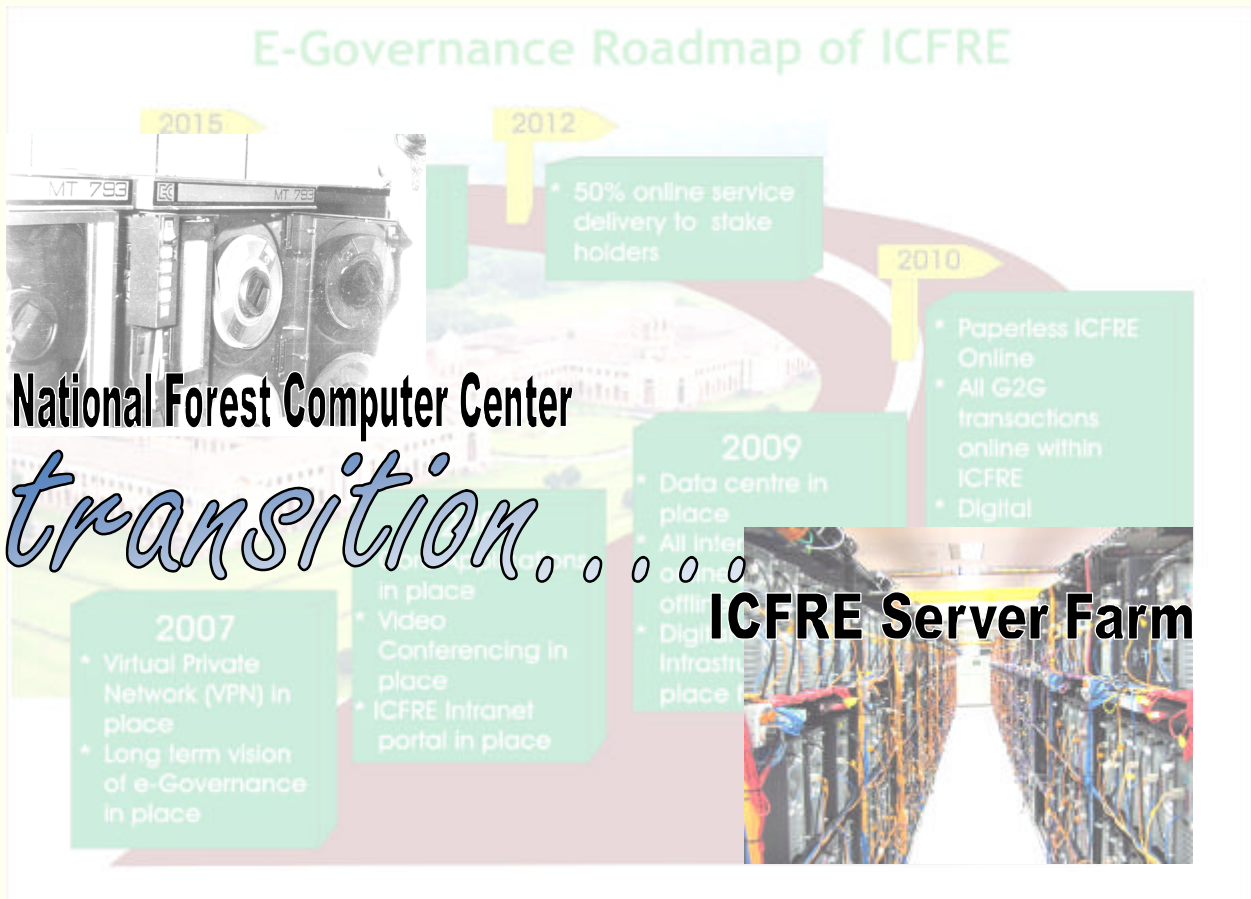




# ***e-parivartan***

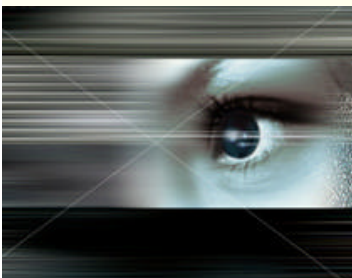
**October -November '08**  
(Vol. I : Issue-7 and 8)



## **IFRIS at a Glance**

- Stage I**    **Conceptualization**  
( 07<sup>th</sup> June 2006 to 31<sup>st</sup> January 2007 )
- Stage II**    **Project Development including Business Process Re-engineering**  
( 15<sup>th</sup> March 2007 to 31<sup>st</sup> August 2007 )
- Stage III**    **Software Development and Implementation (January 2008)**  
Pilot Rollout : October 2008      System Go : Live : March 2009

# **ICFRE**



## About e-parivartan

This newsletter “**ICFRE e-parivartan**” aims to cover the e-governance developments leading to transformation of ICFRE from manual to the electronic environment at ICFRE, its institute / research centers located in different geographical region across the country. The newsletter is a monthly publication for limited circulation (intra-ICFRE and its stake holders) to increase the awareness of the IFRIS Project. **e-parivartan** will be a forum for sharing the views of the Management, the e-champions, users and the developers of the system. Your valuable feedback and inputs on the subject are solicited !

### **Pilot Roll-out of IFRIS begins in a phased manner with Shimla**

The first phase of IFRIS Application roll-out began with HFRI Shimla on 29<sup>th</sup> October 2008 with a lot of enthusiasm and anticipation. HFRI, Shimla was on high gears for this anticipated roll-out under which the interactive training and UAT lasted for fifteen days i.e. 29<sup>th</sup> Oct to 14<sup>th</sup> Nov 2008. The functional consultants from SRIT demonstrated the application to various user groups and introduced them to the various modules. With the roll out at Shimla a sensitization about the actual transition from manual system to automated paper less system has been given a good start. The next phase of the roll-out is expected around 20<sup>th</sup> January 2009.

With pilot roll-out at Shimla, came a few learning as well. The feedbacks received from HFRI Shimla re-iterated the need for implementing the workflows. The need for making the features in PIS more elaborate and emphasis on user friendliness was also raised during the session. Sh. M. S. Garbyal, DDG (Admin), ICFRE has interacted with the users in the institute during the inaugural session of pilot roll-out. On the final day Dr. Harish Kumar, PM, eGov interacted to the various user group to gather feedbacks and ensured them that the feedbacks would be incorporated.

### **To-Be Processes finalized for implementation across ICFRE-Institutes**

After rounds of discussions and Technical Committee Meetings the To-Be Processes for research were finalized. Based on the final approval of the Technical Committee of Research the developers M/s SRIT has incorporated the desired workflow in the IFRIS Application. To-Be processes for Finance and Accounts and for Procurement and Inventory have also been finalized and circulated for implementation across the institutes.

### **3<sup>rd</sup> ICFRE Apex Committee Meeting**

The third ICFRE Apex Committee meeting was held on 17<sup>th</sup> October at ICFRE, Dehradun under the chairmanship of Shri Jagdish Kishwan, Director General, ICFRE. Agendas put forward by the Technical Committees on various domains and the Institute apex Committees were taken up. The Apex Committee stressed on the implementation of TO-BE processes in order to harmonize the functionality across the ICFRE Institutes. The Apex Committee formulated generic To-Be process guidelines based on which the other process guidelines were solicited to be prepared by the respective technical committees. The DG, ICFRE stressed the need for all members (local and through VC) to ensure that the TO-BE processes as laid down by the ICFRE are instituted as early as possible and put to use before the pilot roll out of the IFRIS Application. The Apex Committee also re-iterated the essentiality of active participation of Institutes for successful implementation of IFRIS and necessary Infrastructure and logistics support during implementation. Finally, DG ICFRE

appreciated the effort, involvement and participation of all e-Champions and ensured due recognition to the deserving.

### **Need Assessment Committee to assess the IT Infrastructure at Institutes in light of the IFRIS roll-out**

It was decided in the 3<sup>rd</sup> ICFRE Apex Committee that a Need Assessment committee be constituted to guide the institutes to guide and estimate the requirement of IT Infrastructure in order to ensure a smooth implementation of IFRIS across all Institutes and Hqrs. The committee would assess the IT Infrastructure requirement at Institutes and also assess the financial implications of proposed Infrastructure and logistics to conduct training and roll-out of IFRIS.

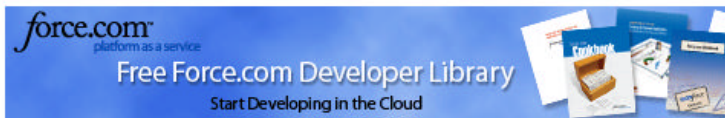
### **Emphasis on Capacity Building – Institute Apex Committee**

All the institutes imparted training to identified employees for capacity building and people readiness for IFRIS rollout. The committee meeting focused on briefing the participants with overall progress of the IFRIS project. The committees also chalked out plans to impart training on accounting and double entry system for the staff of accounts section and different divisions. This training is necessary to successfully handle the finance module under IFRIS that will require the practice of Double Entry Accounting System. IFP Ranchi has already completed the training and IFGTB is not far behind. The institutes also briefed about the guidelines received for various modules of IFRIS which were approved by the Technical Committee at ICFRE. Further, institutes are making efforts to train the e-champions and nominated key members on Office Tools (MS Office), Networking including MPLS VPN, Elements of Video Conferencing, Information Management, Typical PC hardware, etc. The trainings are organized through various regional government training centres, like Bharat Sanchar Nigam Limited as per ICFRE Apex Committee guidelines. These training would definitely go a long way in ensuring smooth rollout of IFRIS.

### **ICAR consolidates its presence on Web**

The Indian Council of Agricultural Research (ICAR) is an autonomous apex body responsible for organizing, conducting and managing research and education in the field of Agriculture and Allied Sciences in India, much in similar lines of ICFRE. The ICAR also acts as a repository of knowledge and provides information on various aspects of Agriculture including animal sciences and fisheries. In view of this ICAR needs strong and dynamic web presence of ICAR institutions. Though the ICAR institutions have their own websites which are informative and educative but they lack uniformity, they are static and do not contain important features like content search, information retrieval and processing. Moreover there is no single gateway for getting access to all information about National Agricultural Research and Education at one place. In this regard the National Agricultural innovation Project (NAIP) a world bank funded AGROWEB sub-project was envisioned to enhance the web presence of ICAR for effective knowledge management and exchange. The National Dairy Research Institute (NDRI) consortium along with its associate institutes will develop a comprehensive Website of Animal Sciences, Dairy Science and Education along with Technology Transfer, which will part of this AGROWEB sub-project.

NRDI had conducted a requirement workshop on needs assessment for the AGROWEB sub-project website development on 3<sup>rd</sup> and 4<sup>th</sup> October '08 in their Karnal Campus. Dr. Harish Kumar, Scientist E, representing ICFRE, was invited to give a presentation on Web Content Development for Animal Sciences, during the Technical Session of the workshop.

**IFRIS in Media**<http://www.expresscomputeronline.com/20081124/itingovernance02.shtml>

www.expresscomputeronline.com

WEEKLY INSIGHT FOR TECHNOLOGY PROFESSIONALS

24 November 2008

**State WAN: the underlying framework**

**Pratap Vikram Singh** takes a look at the underlying SWAN technologies that will host some key applications envisaged by the NeGP

State Wide Area Network (SWAN) is one of the core infrastructure.....  
said.

**ICFRE connects to HIMSWAN**

Indian Council of Forestry Research and Education (ICFRE) is a nodal body for forestry research. Established in December 1986 by the Union Ministry of Environment and Forests. ICFRE work has been to formulate, organize, direct and manage forestry research; transfer developed technologies to States and other agencies; and impart forestry education.

Initiating office automation through computerization and training in 1995, with assistance from United Nations, the ICFRE has come a long way in leveraging the ICT and transforming the way multiple-central organizations work. Couple of years back, ICFRE deployed MPLS VPN on BSNL leased line.

The Council has developed a comprehensive Information Technology software solution called Indian Forestry Research Information System (IFRIS). The software aims to transform the present manual working environment into an automated system.

The key focus areas of IFRIS:

- Translate present working manual systems into automated systems
- Enhance responsiveness through workflow automation and knowledge management
- Real time information management of research projects
- Enhanced monitoring of ICFRE engagements with external stakeholders
- Enhance convenience of users, stakeholders in accessing the information and services

With IFRIS, now the concept note of the various researches going on in any center of the Council will be known by the other centers as well. Stakeholders of the Council such as progressive farmers, State Forest department and the industry will have greater interaction and participation in Council's operations.

**Connecting IFRIS with HIMSWAN**

What is most promising is that ICFRE is in process to connect the IFRIS with State Forest Department situated in Shimla through the Himachal Pradesh State Wide Area Network (HIMSWAN).

With the implementation in place, the farmers in rural areas will have access to the required research findings with the help of CSC, which will connect them to the Council and IFRIS. The Council is further going one step ahead in providing information to the farmers and concerned people by paying to the CSC vendor according to the number of farmers it has rendered its ICT service. With the implementation of e-Governance initiatives in the Council, the findings/ results of researches would be available online to farmers, stakeholder and other user agencies, which would help in improvisation of various sectors. Additionally there is a provision of fixing the responsibility at each level including time limits under the modules developed for research, financial accounting, extension, personnel information management and the like.

Now many other national agencies are approaching ICFRE, viewing their expertise in generating in-house talent pool (the ICT trained personnel in the ICFRE called as e-Champions) and connecting all the stakeholders and even the citizens through the Business Process Re-engineering.

*The next edition of ICFRE e-parivartan solicits your views on the process of change envisaged by the institution.*

**Editors**

**Dr. Harish Kumar**  
Project Manager (e-  
gov), ICFRE, Dehradun  
[harish@icfre.org](mailto:harish@icfre.org)

**R.K. Verma**  
e-champion, ICFRE

**Devanjan Das**  
Consultant, Wipro

**Tijo Thomas**  
Consultant,  
SRIT

**INFORMATION TECHNOLOGY CELL**  
**INDIAN COUNCIL OF FORESTRY RESEARCH AND EDUCATION**  
P.O. NEW FOREST, DEHARDUN – 248 006 (UTTARAKHAND), INDIA

[www.icfre.gov.in](http://www.icfre.gov.in)